



Direct Connect Undersink Water Filtration System

WD-UA system | Installation Instructions

Warning: Please read it carefully before installation.



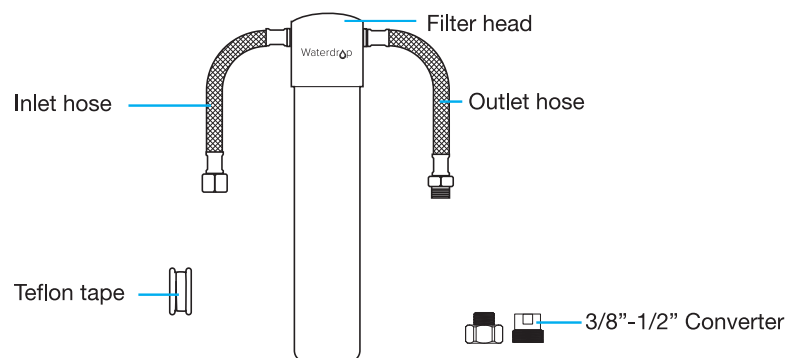
Please scan the QR code for quick replacement guide and issue solving.

If you have problems during the purchase or installation process, please contact our customer service.

☎ 1-888-352-3558, Mon-Fri 8:00 AM-5:00 PM (PST)

✉ service@waterdropfilter.com

💬 waterdropfilter.com-live chat



Specifications

Operating temperature	2-38°C/35-100°F
Working pressure	10-125 psi (0.7-8.6 bar)
Flow rate	2 gpm/7.57 lpm
Filter capacity	WD-RF10/WD-RF10-UF/MZ/AK: 8,000 gallons WD-RF15/WD-RF15-UF/MZ/AK: 16,000 gallons WD-RF17/WD-RF17-UF/MZ/AK: 19,000 gallons

Note: The above form lists model numbers of only black filters. Please note that the white filter is different from the black filter only in color. They have the same filter material and filtration capacity.

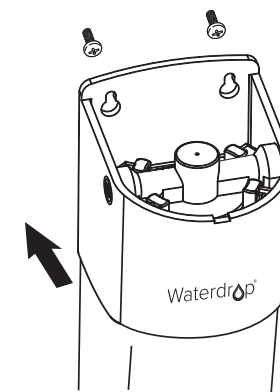
Precautions

- Do not use it with water that is microbiologically unsafe or of unknown quality without adequate disinfection.
- For cold water line only.
- Do not freeze the filter, as this can cause cracking and water leakage.
- Do not allow children under 3 years old to have access to small parts during installation of this product.
- This installation must comply with all applicable state and local regulations.
- Turn off the water supply while replacing the filter.

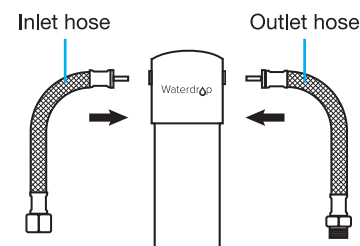
Installation of the filter system

Step 1: Fix the filter head and the filter.

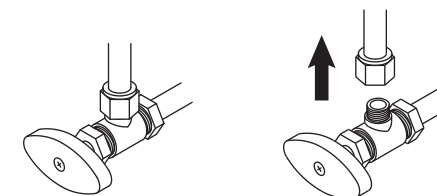
1. Paste the assistant label to finish drilling.
(Note: Mount the water filter at least 2 inches higher than the ground for easier filter change.)
2. Install the screw and reserve enough space to hang the filter.
3. Hang the filter system on the screws.



Step 2: Connect the water supply (cold water only).



Connect the inlet hose and the outlet hose to the filter head.



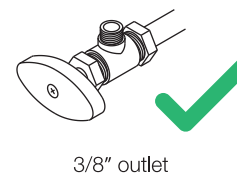
Shut off the water supply.

Remove the faucet hose.

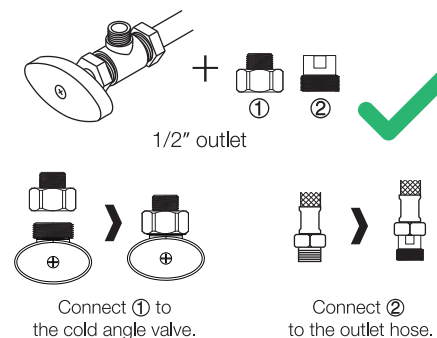
Note: When the hose is tightly inserted, there will be a 1/8 inch gap between the hose and the filter head, which is designed for easy replacement and won't affect the sealing performance.

Connect the inlet hose to the cold water valve.

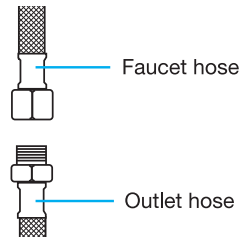
- If the angle valve outlet is 3/8", it can be directly connected to the water supply.



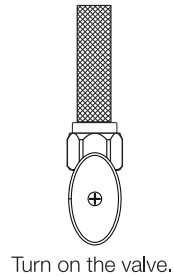
- If the angle valve outlet is 1/2", it can be connected via the following two fittings.



Step 3: Connet to the fauct

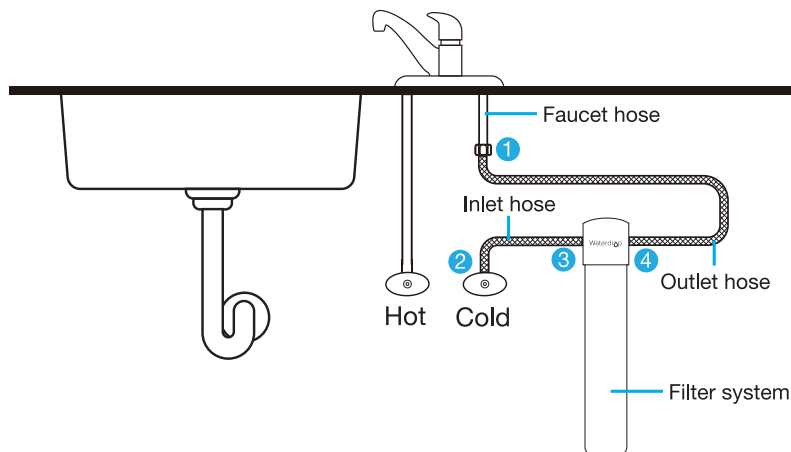


Connect the outlet hose to the faucet hose.



Turn on the valve.

Note: If the original faucet is equipped with a male connector, resulting in disconnection, please contact our customer services.

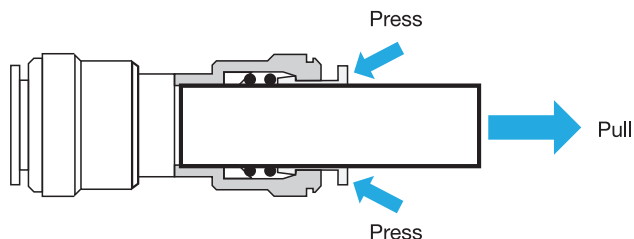


- If water leakage occurs, turn off the water supply. If the water leakage is at position 1 or 2, wrap Teflon tape on the external thread. If the water leakage is at position 3 or 4, insert the quick-connect fitting to the end.
- Flush the filter for 5 minutes before use.

To disconnect

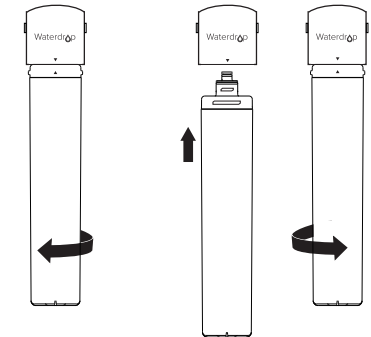
Use your thumb and index finger to press down on the lock sleeve. Use your other hand to pull out the hose from the fitting.

Note: Please do not pull out the hose directly, or else it will damage the fitting and cause leakage.



Filter replacement

1. Turn off the water supply.
2. Rotate 1/4 turn to the left to remove the filter.
3. Take out the new filter and remove the protective cap.
4. Rotate 1/4 turn clockwise to install the filter. Ensure that the filter's triangle mark is aligned with the connection mark.
5. Turn on the cold water valve and flush for 5 minutes.



Remove the filter

Install the filter

Frequently asked questions:

Q: What should I do if water leaks after installation?

A: In the event of water leakage, turn off the water supply. If the water leakage is occurring at the thread, wrap Teflon tape on the external thread. If the water leakage is occurring at the quick connection position, insert the quick-connect fitting to the end and make sure the hoses hit the bottom of the fitting. Contact us for solutions if the water leakage persists.

Q: Why didn't the TDS value lower after filtration?

A: The main purpose of this Waterdrop filter is not to remove TDS. TDS stands for total dissolved solids, and it is basically composed of inorganic salts and a small amount of organic matter. The filter can remove harmful substances while keeping beneficial trace elements. Please choose Waterdrop RO system if you are looking for physical removal of TDS.

Q: When should I replace the filter?

A: The filter's service life is related to the water quality. If the flow rate is significantly reduced or if the water has a peculiar smell, we suggest that you replace the filter. The recommended service life of the filter is as follows: 1 year for WD-RF10 and WD-RF10-UF, 2 years for WD-RF15 and WD-RF15-UF, and 3 years for WD-RF17 and WD-RF17-UF.

Q: What substances can the filter remove?

A: Our premium coconut carbon block filter has been tested by an independent laboratory against NSF standards. It can effectively reduce chlorine, taste and odor, limescale, cysts, fluoride, hydrogen sulfide, arsenic, lead, and other heavy metals.

Q: Why does black water come out during flushing?

A: It's normal that black water comes out when flushing. The purpose is to remove carbon powder remaining on the surface of filter materials. You can normally use it after flushing for 5 minutes.

1-year quality assurance

All mechanical devices with moving parts have a normal life span and will need to be replaced periodically. For this reason, mechanical devices such as water fittings, filter head, and faucets have a limited replacement assurance of 1 year. No assurance is given as to the service life of any filter cartridge, as the service life will vary based on local water conditions and water consumption.

If the product proves to be defective within 1 year from the date of purchase, please contact our customer service department. During the assurance period, we will replace or repair any part that is deemed to be defective if the product has not been subjected to tampering, alteration, or improper use after delivery, and has not been repaired by the manufacturer.

We do not make any promises in the event of misuse, use in abnormal temperature conditions, conditions outside those listed in the operating parameters, or use in commercial operations.